

```
=====
Acq. Instrument : Instrument 1                      Seq. Line : 1
Injection Date  : 30-Apr-18, 08:09:32             Location  : Vial 1
                                                    Inj       : 1
                                                    Inj Volume: 0.1 µl
Sequence File   : C:\Chem32\1\DATA\04301811\4271812 2018-04-30 08-07-27\4271812.S
Method          : C:\Chem32\1\DATA\04301811\4271812 2018-04-30 08-07-27\DCITRUS.M
Last changed    : 11/13/2017 7:47:16 AM
Sample Info     : OIL. JUNIPER BERRY FCC (EURO DISTILLED)
```

```
=====
Module          Type      Firmware rev.  Serial number
-----|-----|-----|-----
68GC           68GC      A.03.08       US00027560
7673           7673      G2612A.02.01
```

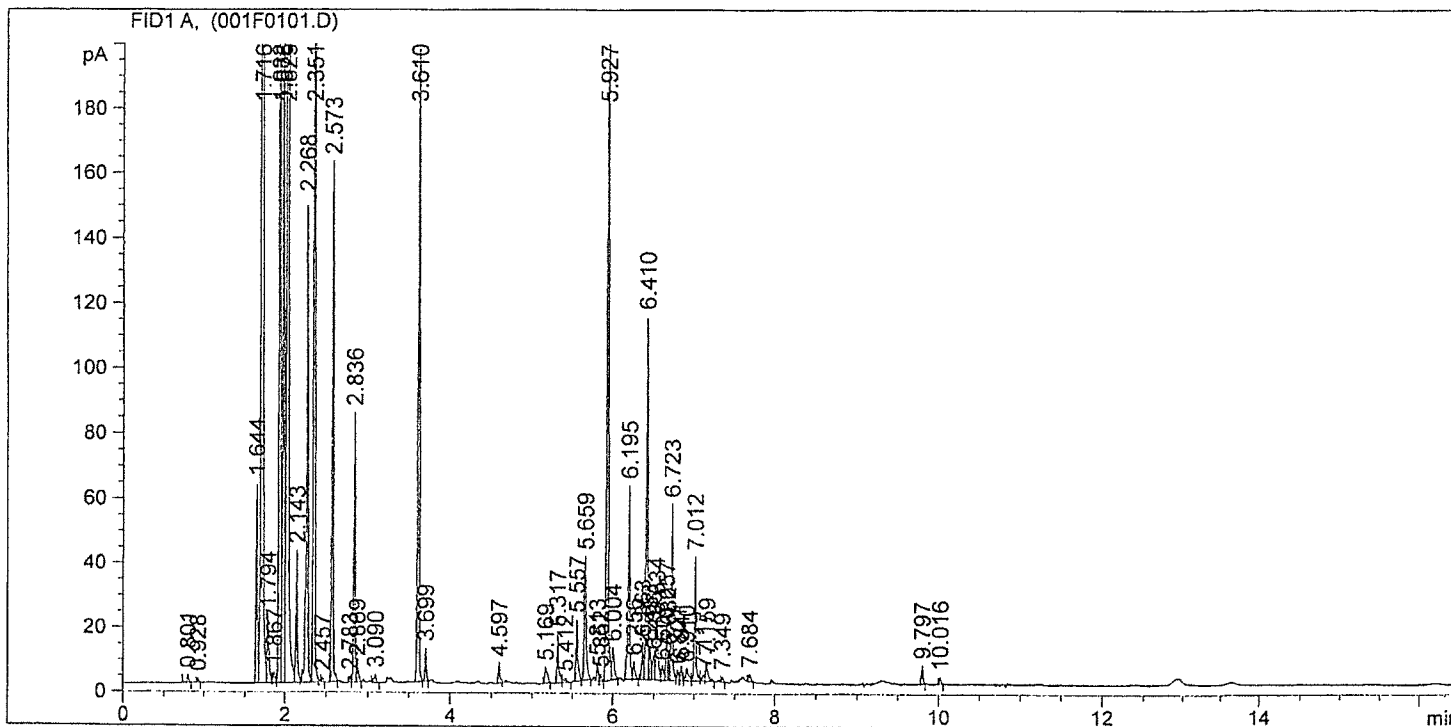
Software Revision: Rev. B.03.02 [341] Copyright © Agilent Technologies

```
=====
Column Description : ZB-1MS
Product#           : 7FD-G011-08      Batch#: Zebtron
Serial#            : AB001
Diameter           : 180.00 µm        Length : 20.0 m
Film thickness     : 0.18 µm          Void time : 0.988 min
Maximum Pressure   : 0 bar            Maximum pH : 0
Maximum Temperature: 0 °C
Comment           :
```

```
Column Description : ZB-WAX PLUS
Product#           : 7FD-G013-08      Batch#: Zebtron
Serial#            : AB002
Diameter           : 180.00 µm        Length : 20.0 m
Film thickness     : 0.18 µm          Void time : 0.988 min
Maximum Pressure   : 0 bar            Maximum pH : 0
Maximum Temperature: 0 °C
Comment           :
```

Run Logbook

```
=====
Method          Method started: (F) line# 1 vial# 1 inj# 1      08:07:37 04/30/18
Method          Method started: (B) line# 1 vial# 11 inj# 1     08:07:37 04/30/18
Method          Instrument running sample Vial 1 (front)       08:07:38 04/30/18
Method          Instrument running sample Vial 11 (back)       08:07:38 04/30/18
Method          Saving Method DCITRUS.M                       08:26:03 04/30/18
Method          Saving Method RUN.M                           08:26:08 04/30/18
Method          Saving Method RUN.M                           08:26:10 04/30/18
Method          Instrument run completed                       08:26:10 04/30/18
CP Macro        Analyzing rawdata 001F0101.D                   08:26:10 04/30/18
=====
```



=====
 Area Percent Report
 =====

Sorted By : Signal
 Multiplier : 1.0000
 Dilution : 1.0000
 Use Multiplier & Dilution Factor with ISTDs

Signal 1: FID1 A,

Peak #	RetTime [min]	Type	Width [min]	Area [pA*s]	Height [pA]	Area %
1	0.801	BB	0.0244	4.44902	2.54799	0.06656
2	0.928	BB	0.0169	1.68852	1.53201	0.02526
3	1.644	BV	0.0181	74.95982	62.18796	1.12146
4	1.716	VV	0.0195	2354.45801	1898.29688	35.22472 <i>alpha Pinene</i>
5	1.794	VB	0.0215	31.87278	21.19487	0.47684
6	1.867	BV	0.0265	6.42891	3.33933	0.09618
7	1.932	VV	0.0170	565.64795	509.05551	8.46258
8	1.976	VV	0.0187	255.78131	218.46886	3.82671
9	2.029	VV	0.0181	1077.30237	888.90210	16.11737 <i>myrcene</i>
10	2.143	VB	0.0203	54.44918	41.38568	0.81461
11	2.268	BB	0.0195	198.62202	149.31708	2.97156
12	2.351	BB	0.0170	500.78110	449.82922	7.49212 <i>Limonene</i>
13	2.457	BB	0.0199	1.98299	1.45738	0.02967
14	2.573	BB	0.0176	173.58116	160.68047	2.59692
15	2.783	BV	0.0176	2.18550	2.02507	0.03270
16	2.836	VV	0.0180	93.18702	83.52274	1.39416
17	2.869	VB	0.0229	9.99912	6.18525	0.14960
18	3.090	BB	0.0247	4.72434	2.65995	0.07068
19	3.610	BB	0.0197	245.79939	195.10190	3.67737 <i>TERPINENOL-4</i>

Sample Name: LOT#mD69165

Peak #	RetTime [min]	Type	Width [min]	Area [pA*s]	Height [pA]	Area %
20	3.699	BB	0.0187	12.18836	10.41309	0.18235
21	4.597	BB	0.0212	8.83820	6.38306	0.13223
22	5.169	BB	0.0296	11.08622	5.04862	0.16586
23	5.317	BB	0.0229	23.54200	15.35071	0.35221
24	5.412	BB	0.0331	3.53039	1.46674	0.05282
25	5.557	BB	0.0228	29.25649	19.16984	0.43770
26	5.659	BB	0.0253	63.35808	38.38211	0.94789
27	5.813	BV	0.0190	6.88681	5.73602	0.10303
28	5.852	VB	0.0216	3.24775	2.28112	0.04859
29	5.927	BV	0.0204	306.78067	232.68323	4.58970
30	6.004	VB	0.0270	18.81555	9.96262	0.28150
31	6.195	BV	0.0220	87.71384	60.07658	1.31227
32	6.256	VB	0.0252	9.54311	5.51434	0.14277
33	6.363	BV	0.0222	16.79821	11.37533	0.25132
34	6.410	VV	0.0187	141.61896	112.19945	2.11874
35	6.453	VV	0.0210	14.80527	10.14954	0.22150
36	6.496	VV	0.0251	13.00691	7.54691	0.19459
37	6.534	VV	0.0291	39.49491	18.37051	0.59088
38	6.607	VV	0.0289	8.37592	4.27496	0.12531
39	6.657	VV	0.0199	21.81274	17.11452	0.32634
40	6.682	VV	0.0169	10.16982	9.18135	0.15215
41	6.723	VB	0.0194	67.70120	54.83310	1.01287
42	6.801	BV	0.0199	4.37051	3.20329	0.06539
43	6.841	VV	0.0237	7.00635	4.61943	0.10482
44	6.910	VV	0.0358	9.70164	3.79425	0.14514
45	7.012	VB	0.0207	51.68902	38.49255	0.77331
46	7.117	BV	0.0328	4.61442	2.08574	0.06904
47	7.159	VB	0.0276	11.95524	6.17337	0.17886
48	7.349	BB	0.0221	2.44723	1.66512	0.03661
49	7.684	BB	0.0258	4.41761	2.47430	0.06609
50	9.797	BB	0.0210	7.96519	5.80990	0.11917
51	10.016	BB	0.0231	3.46746	2.23489	0.05188

Totals : 6684.10658 5425.75684

=====
 *** End of Report ***